



← ONE WAY



### CITY HALL 1945



One of the earliest buildings to occupy this corner was built by Mrs. Ann Meremon as a memorial to her late husband, Jean Meremon. Bataille Dry Goods operated on this site in 1847. Later, Joseph Bloch owned the store from 1860 through the 1890s. During this time, the corner became known as the "Bloch Corner." For a short time, the *Opelousas Patriot* newspaper office was housed upstairs. The building later became the City Hotel, which also housed a saloon, barber shop and a restaurant. The hotel closed in 1906, and the following year, after extensive renovations, it became home to the Opelousas Elks Lodge #1048. The property was sold in the early 1940s and was torn down to make way for the current structure, which was completed in 1945 and opened as Abdalla's Furniture Store. The City of Opelousas purchased the building in 2005 and moved City Hall to this location in 2010.

SUPPORTED IN PART BY A  
PRESERVE AMERICA GRANT  
ADMINISTERED BY THE  
NATIONAL PARK SERVICE  
UNITED STATES  
DEPARTMENT OF THE INTERIOR



### BLOCH CORNER Northwest Corner of Bellevue and Main Streets

Named for Joseph Bloch (c. 1833-1900), who emigrated from France and operated a successful mercantile store on this corner from the late 1850s until the later part of that century. The building that housed the store was known as the Miramond Memorial Building, one of the most elaborate buildings in the state at that time. In 1878, the town named a street in Bloch's honor.

THIS PROJECT HAS BEEN FINANCED IN PART  
WITH FEDERAL FUNDS FROM THE  
NATIONAL PARK SERVICE,  
DEPARTMENT OF THE INTERIOR, THROUGH THE  
LOUISIANA DEPARTMENT OF CULTURE,  
RECREATION AND TOURISM,  
OFFICE OF CULTURAL DEVELOPMENT,  
DIVISION OF HISTORIC PRESERVATION

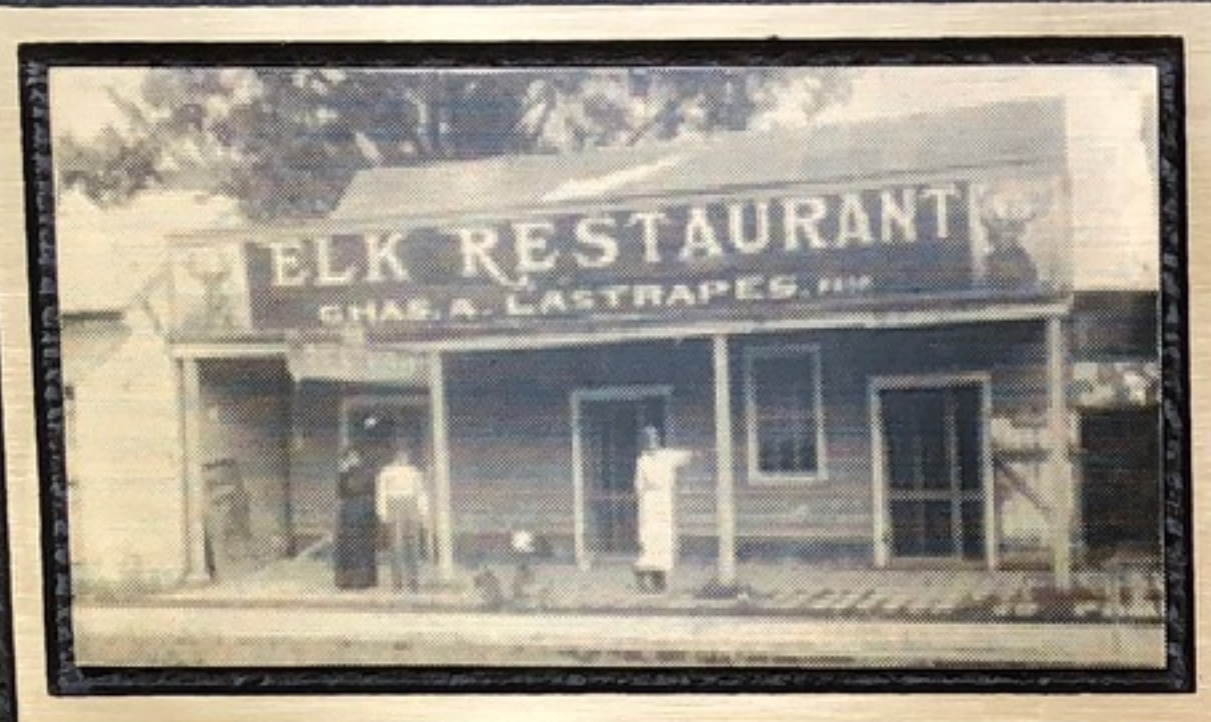


2019

THE OPELOUSAS 300 PROJECT







## BUDD'S CORNER

Northwest Corner of  
Bellevue and Court Streets

Named for J. Adam Budd

who owned a building on this corner for many  
years, where he operated a saloon.

Another business also located in the Budd Building  
in the early 1900s was the Elk Restaurant owned  
by chef Charles A. "Didee" Lastrapes, who later  
owned and operated the famous Didee's Restaurant.

THIS PROJECT HAS BEEN FINANCED IN PART  
WITH FEDERAL FUNDS FROM THE  
NATIONAL PARK SERVICE,  
DEPARTMENT OF THE INTERIOR, THROUGH THE  
LOUISIANA DEPARTMENT OF CULTURE,  
RECREATION AND TOURISM,  
OFFICE OF CULTURAL DEVELOPMENT,  
DIVISION OF HISTORIC PRESERVATION



2019

THE OPELOUSAS 300 PROJECT



**JACOBS CORNER**  
 Northeast Corner of  
 Main and Bellevue Streets

Named for Solomon Jacobs (1838-1917), an immigrant from Germany who opened his mercantile store on this corner during the 1860s. Jacobs store was the place to find just about any kind of staple and dry goods, such as shoes, hats, clothing, crockery, hardware, and groceries. The business operated for many years with Solomon's sons, Jonas, Aaron and Adolph, eventually operating the store. The building was eventually sold and demolished. Jacobs Corner eventually became a car lot for Bordelon Motors, Inc., a Ford dealership in downtown Opelousas for several decades.

THIS PROJECT HAS BEEN FINANCED IN PART  
 WITH FEDERAL FUNDS FROM THE  
 NATIONAL PARK SERVICE,  
 DEPARTMENT OF THE INTERIOR, THROUGH THE  
 LOUISIANA DEPARTMENT OF CULTURE,  
 RECREATION AND TOURISM,  
 OFFICE OF CULTURAL DEVELOPMENT,  
 DIVISION OF HISTORIC PRESERVATION



2019  
 THE OPELOUSAS 300 PROJECT



## **KING'S CORNER**

Southwest Corner of  
Landry and Main Streets

Named for the family of Felix King (1819-1897), who owned a general merchandise store on this corner as early as 1847. King also served as President of the Board of Police for some years. When King went out of business, other merchants occupied the store until the late 1880s. The building was demolished around 1888 and replaced with the First National Bank of Opelousas, which later became St. Landry State Bank.

*THIS PROJECT HAS BEEN FINANCED IN PART  
WITH FEDERAL FUNDS FROM THE  
NATIONAL PARK SERVICE,  
DEPARTMENT OF THE INTERIOR, THROUGH THE  
LOUISIANA DEPARTMENT OF CULTURE,  
RECREATION AND TOURISM,  
OFFICE OF CULTURAL DEVELOPMENT,  
DIVISION OF HISTORIC PRESERVATION*



**2019**  
**THE OPELOUSAS 300 PROJECT**





## MANON'S CORNER

Northeast Corner of  
Court and Landry Streets

Named for Manon Baldwin,  
a Free Woman of Color and one of the first  
known businesswomen in Opelousas.

The businesses she owned included a  
tavern and boarding house that were operated  
on this corner until her death in 1858.

*THIS PROJECT HAS BEEN FINANCED IN PART  
WITH FEDERAL FUNDS FROM THE  
NATIONAL PARK SERVICE,  
DEPARTMENT OF THE INTERIOR, THROUGH THE  
LOUISIANA DEPARTMENT OF CULTURE,  
RECREATION AND TOURISM,  
OFFICE OF CULTURAL DEVELOPMENT,  
DIVISION OF HISTORIC PRESERVATION*



2019  
THE OPELOUSAS 300 PROJECT





UNION BANK & TRUST CO.

NO  
PARKING

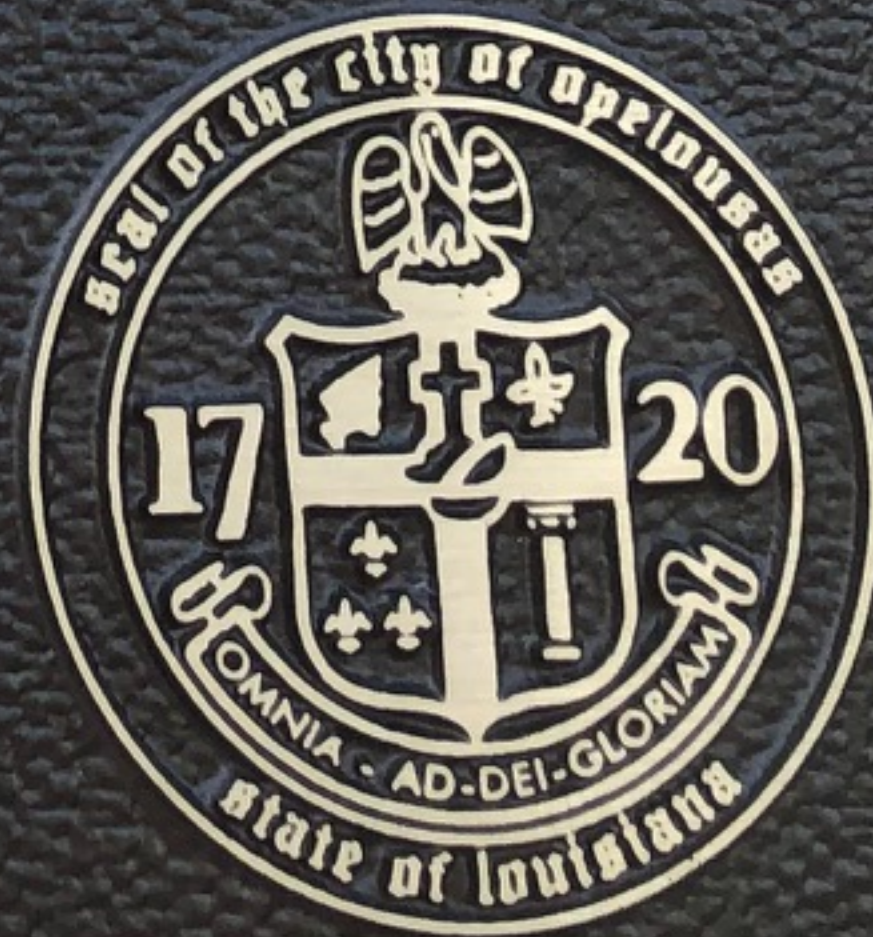


## **PITRE'S CORNER**

**Southeast Corner of  
Bellevue and Court Streets**

Charles Pitre owned a building on this corner for many years. The Pitre building housed several businesses, including Eddy's Pool Hall and Saloon and the Eddy Hotel. In 1904, the building was destroyed by fire. In 1911, Union Bank and Trust constructed the current Beaux-Arts style building.

**THIS PROJECT HAS BEEN FINANCED IN PART  
WITH FEDERAL FUNDS FROM THE  
NATIONAL PARK SERVICE,  
DEPARTMENT OF THE INTERIOR, THROUGH THE  
LOUISIANA DEPARTMENT OF CULTURE,  
RECREATION AND TOURISM,  
OFFICE OF CULTURAL DEVELOPMENT,  
DIVISION OF HISTORIC PRESERVATION**



**2019**  
**THE OPELOUSAS 300 PROJECT**